

Official Launch Event

AEPC / NRREP

Program for Large Scale

Commercial & Municipal Biogas Plants

Supported by:

SREP Extended Biogas Project



Venue: Soaltee Hotel

Date: 3rd February, 2015



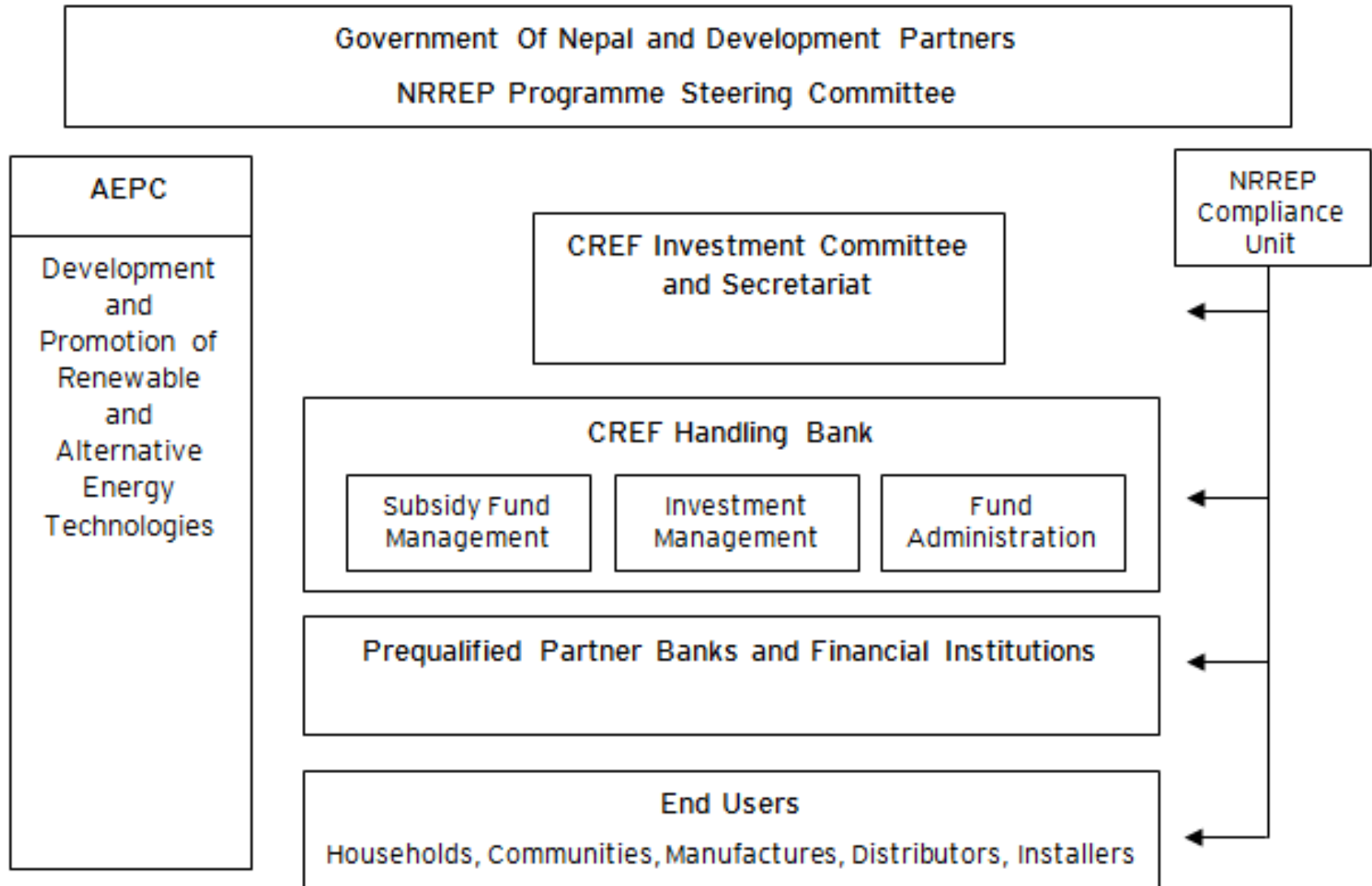
Central Renewable Energy Fund

Overview

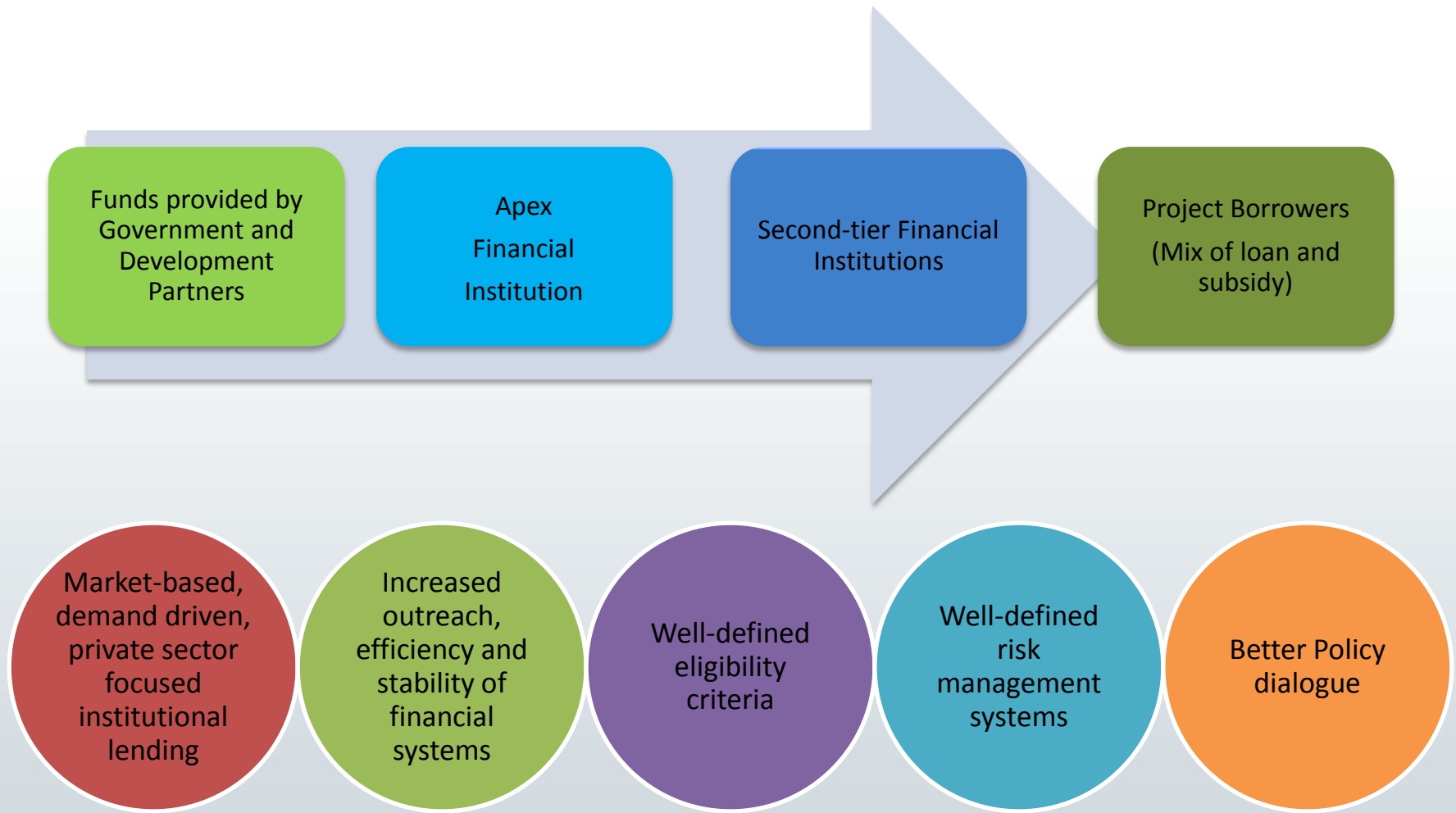
Mr. Prithvi Gyawali
CREF Secretariat



Financial Management Mechanism (FMM)



FMM Based on ADB's Financial Intermediation Lending Policy



CREF Investment Committee and Secretariat

CREF Investment Committee

Chairperson

- Ministry of Science, Technology and Environment

Member

- Ministry of Finance

Member

- Executive Director, AEPC

Member

- CEO of “Class A” bank nominated by Nepal Bankers’ Association

Member

- Representative from the private sector

CREF Secretariat

Head of Secretariat/Specialist

- Management & Monitoring Specialist

Specialist

- Capacity Building Specialist



Current Status

CREF Investment Committee (5 members) and Secretariat (2 specialists) established and functional. 17 CREF IC meetings already held.

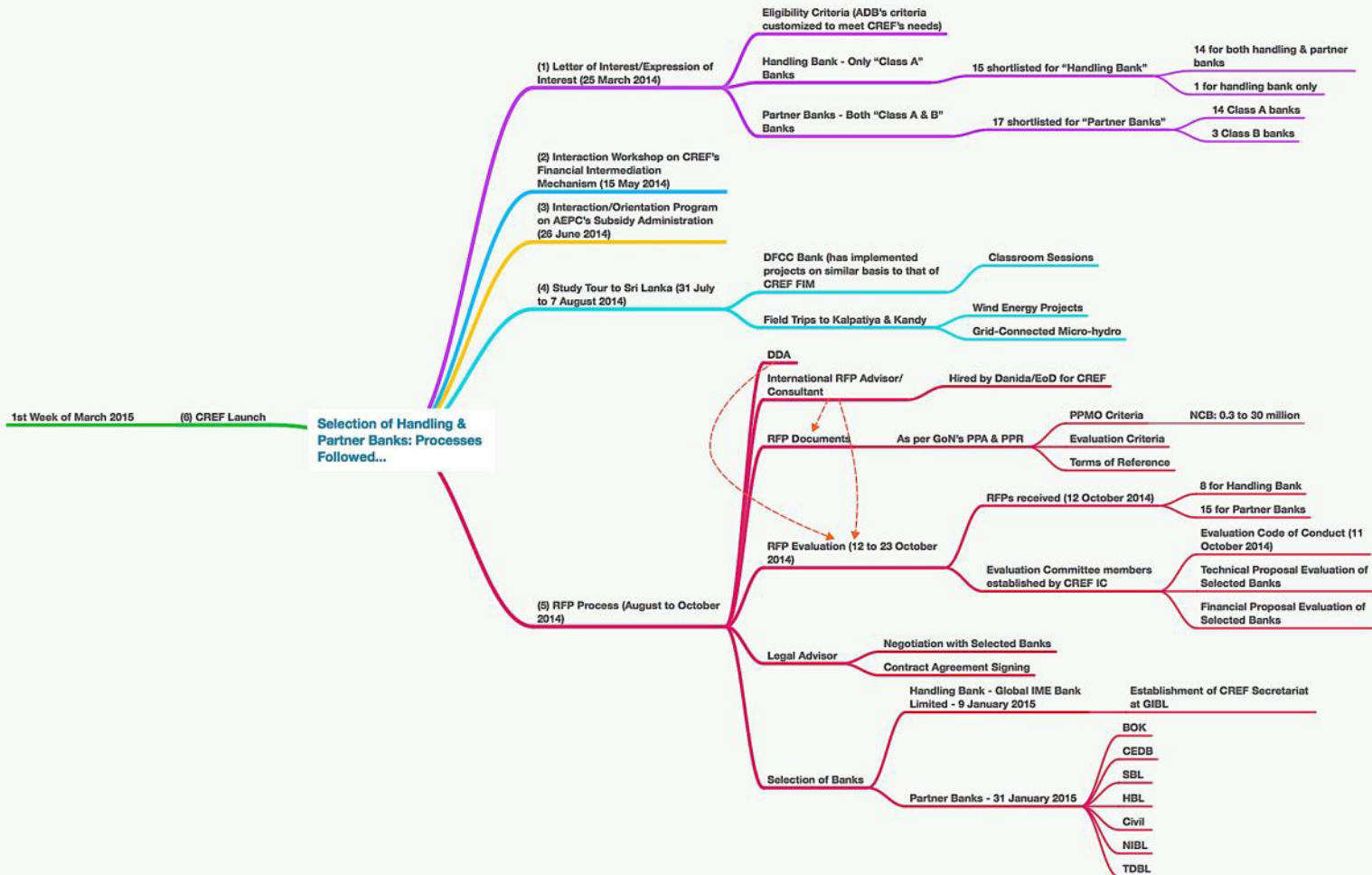
CREF's Financial Management Mechanism, Legal Status, Operational Guidelines approved by GoN, MoSTE.

1 Handling Bank (GIBL) and 7 Partner Banks (BOK, CEDB, CIVIL, NIBL, SBL, HBL & TDBL) selected through GoN's PPA and PPR.

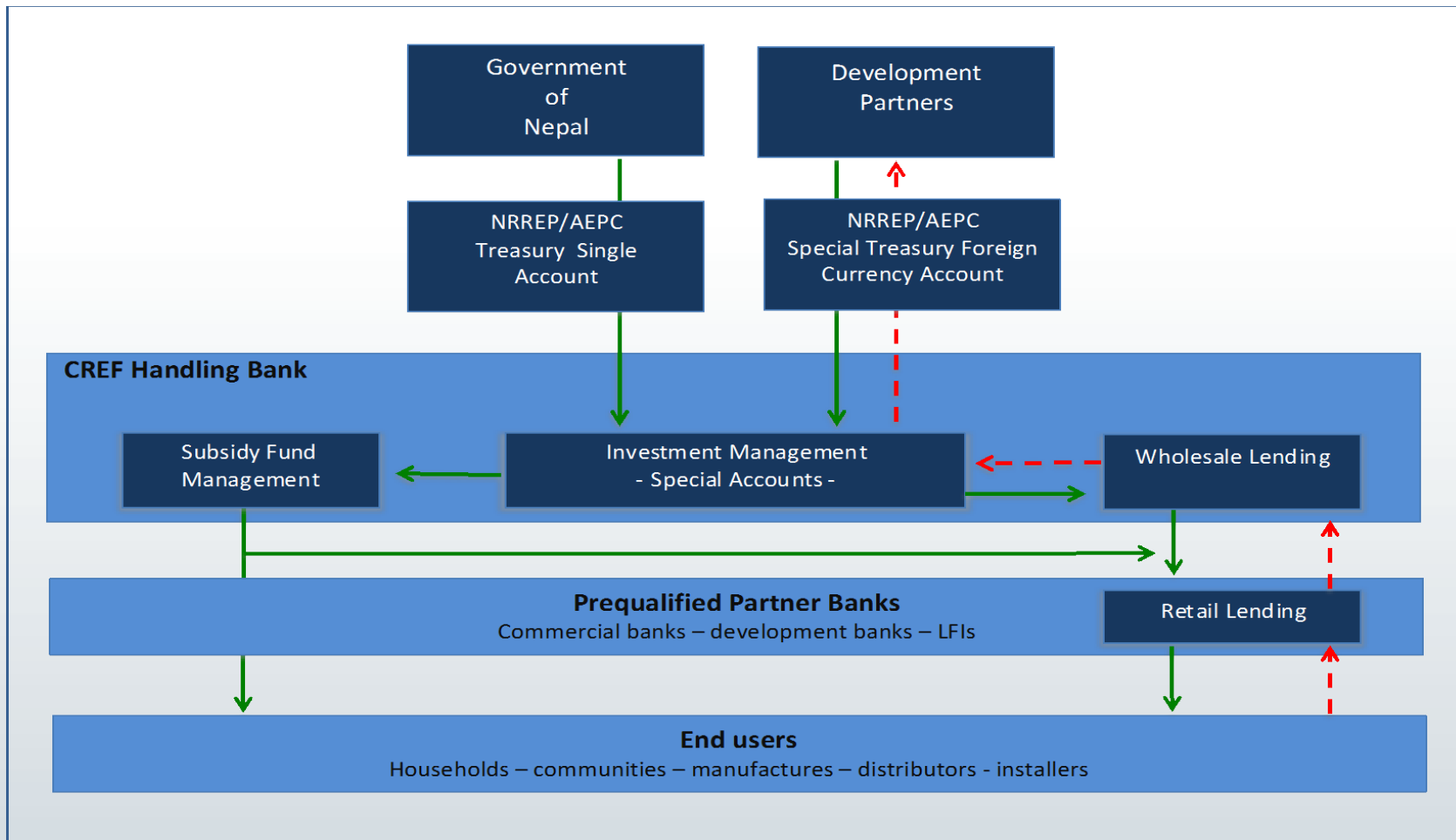
CREF Secretariat office established at GIBL.



Handling & Partner Banks Selection Process



Funds Flow Mechanism



Thank You

Mr. Prithvi Gyawali
CREF Secretariat
Central Renewable Energy Fund

